



Hello! Boozhoo!

Marten Falls First Nation All Season Community Access Road

Existing Conditions Report and Route Selection Milestone

Thunder Bay: October 25, 2023

Geraldton: October 26, 2023





Hello! Boozhoo!

Marten Falls First Nation All Season Community Access Road

Existing Conditions Report and Route Selection Milestone

Thunder Bay: October 23, 2023

Marten Falls First Nation: October 24, 2023





Planning for the Community Access Road is progressing well towards our next major milestone.

Join us today to learn about and provide feedback on:

- Updates since Public Information Centre #4
- Update on what we heard at the Aboriginal and Treaty Rights and Interests (ATRI) Forum and plans for the next forum;
- Update on existing conditions results for completed studies;
- How Indigenous Knowledge is used and how it informs the process;
- Achieving the next major milestone: Identifying the preferred route and how route alternatives will be assessed, recommended and a preferred route chosen;
- Cumulative effects assessment and why it is important; and
- Next steps and future opportunities to get involved.



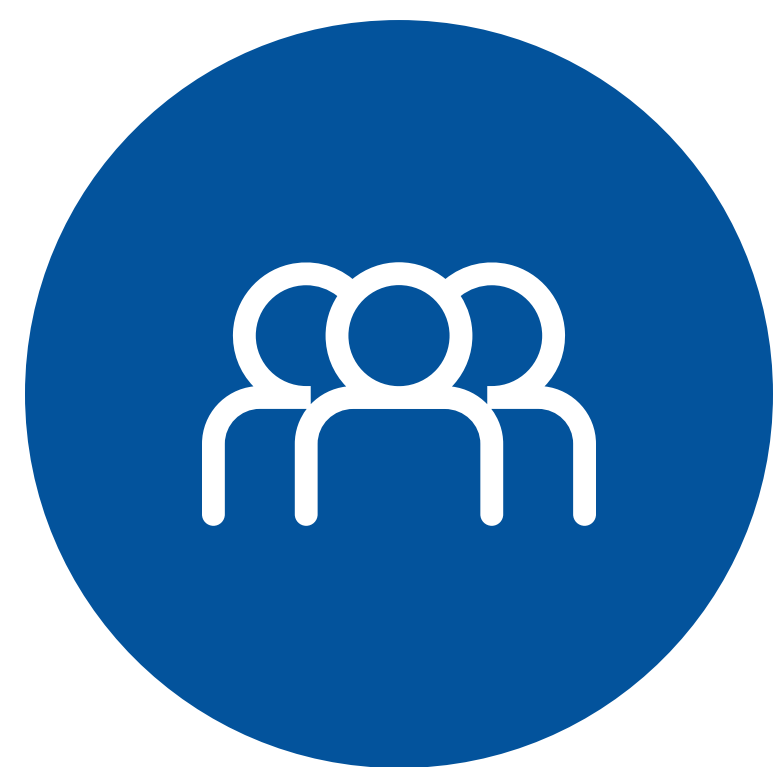
Share your comments, ideas and values with the Team.



Building the Community Access Road

The Community Access Road is needed to improve the well-being of the community by reducing transportation costs for goods and services, increasing access, helping foster economic development and improving quality of life for community members.

Better Access = More Opportunity



Social interaction with other communities



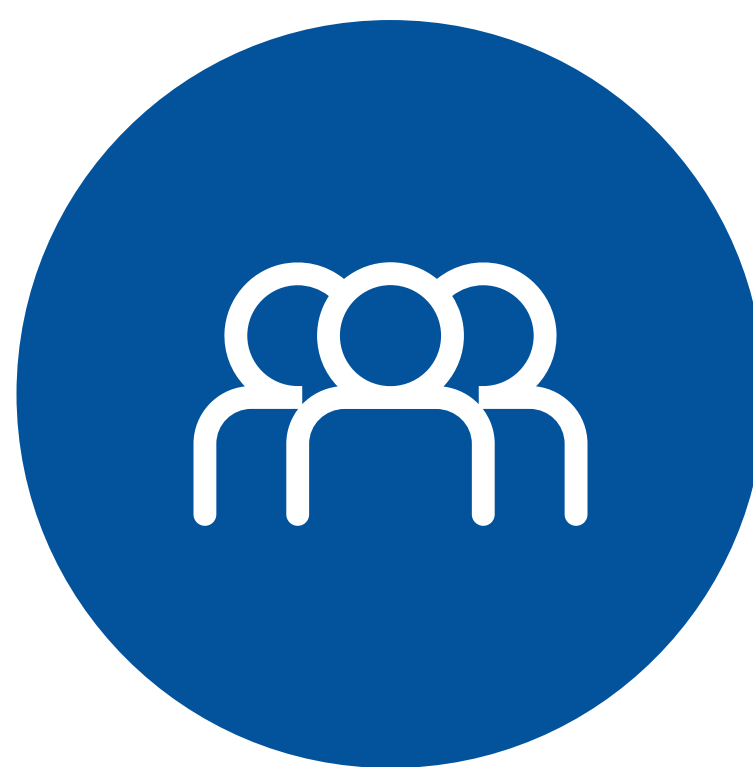
Easier access to emergency, health and social services



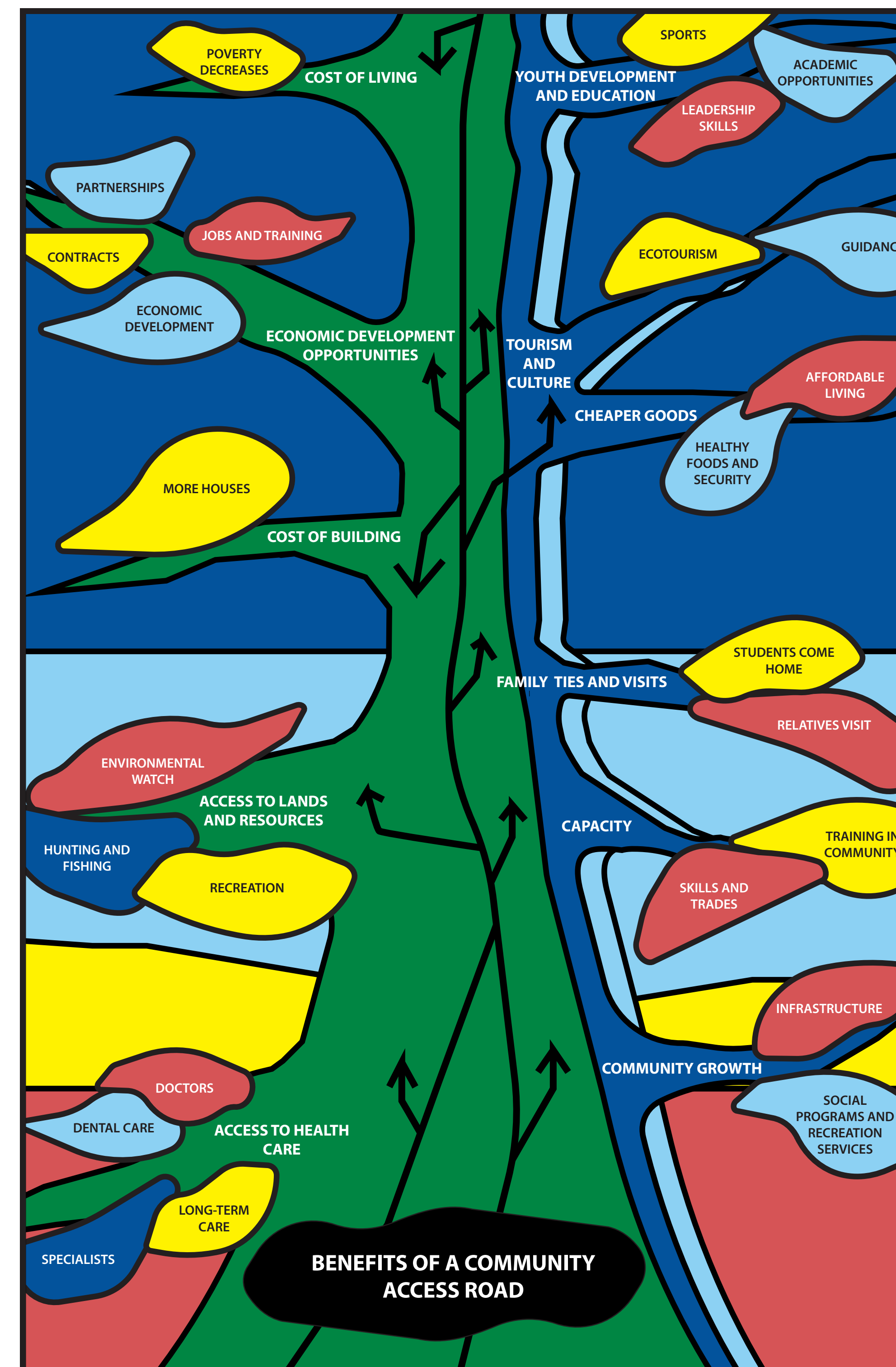
Expanded employment opportunities for community members



Local economic development



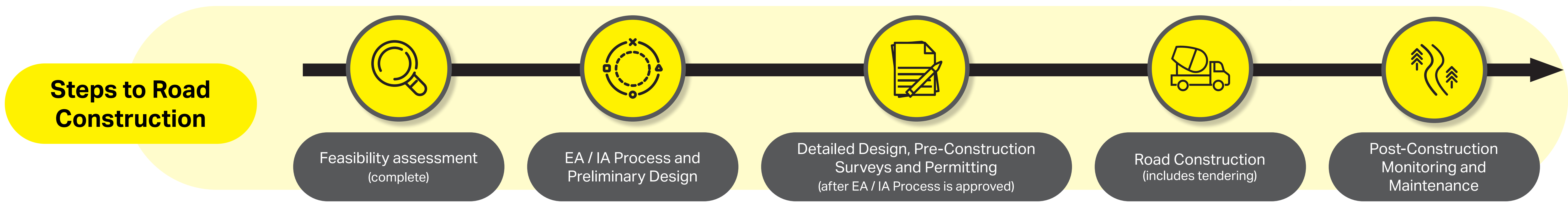
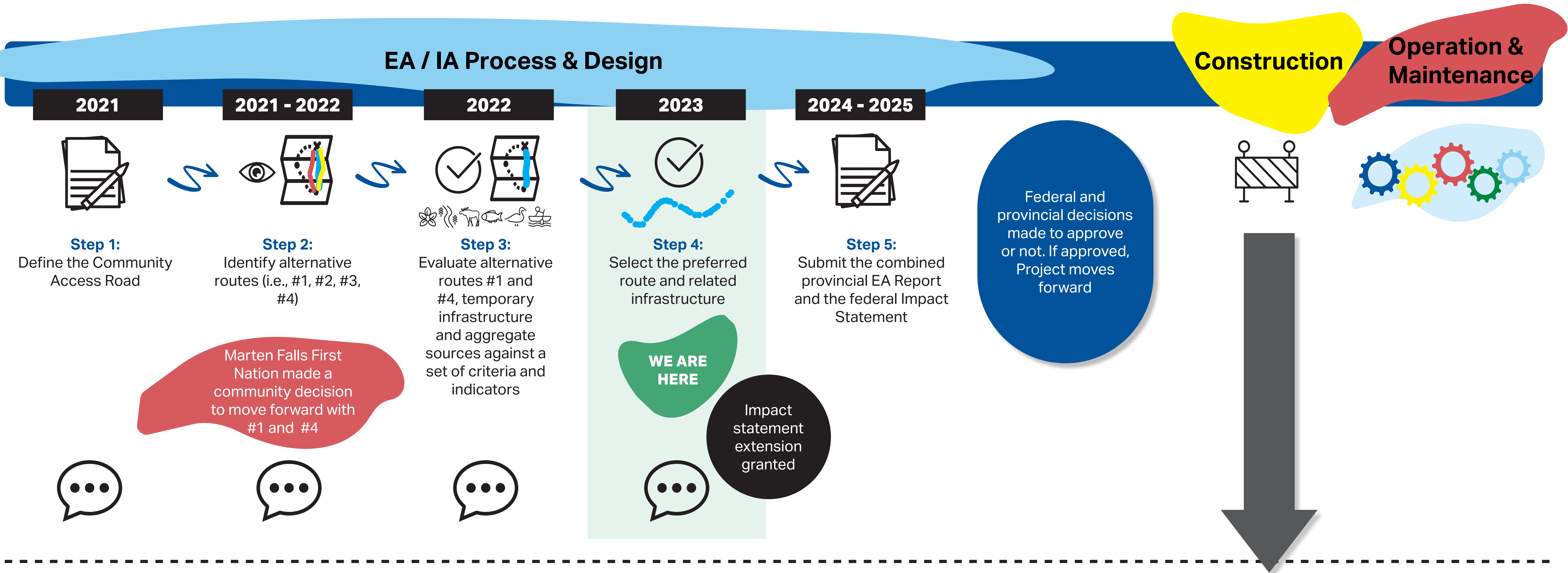
Increased ability for families to be together in the community



Do you have any concerns or feedback you would like to share?



Where we are in the Process





What have we heard?

Since the last Public Information Centre in December 2022, the Community Access Road Team has been engaging with the Marten Falls First Nation community, other Indigenous Communities and the public. What we heard has helped inform the **Existing Conditions Reports** and the methodology used to select the **Technically Preferred Route**.

You asked about:

- Alternative routes and segments
- The EA / IA process
- Field studies and results
- Other road and development projects in the area
- Construction and operations of the road

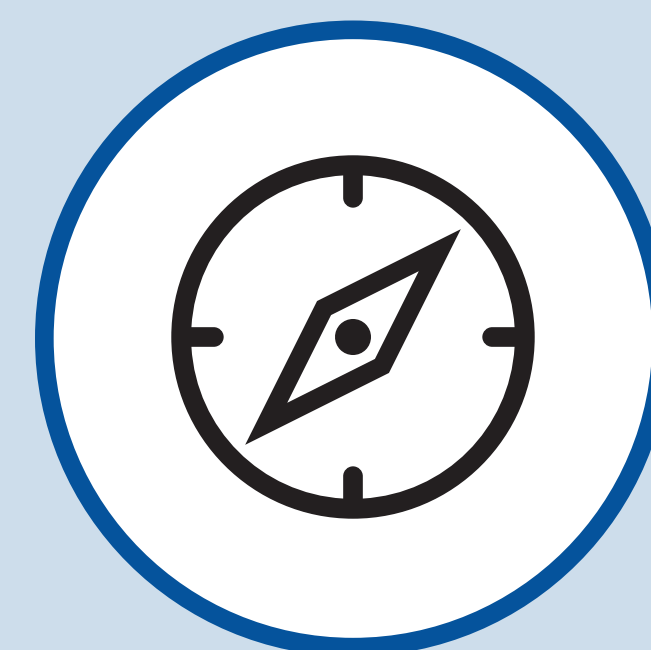
When can we see results from the field studies?

Community members are worried about the security of the road.

When will construction of the road begin?

How is this road connected to the Ring of Fire development?

Can the route be closer to the Albany to allow for access during low flow periods?



See the Frequently Asked Questions Handout for information on these and other topics, fill out the feedback form or speak with a member of the Team!



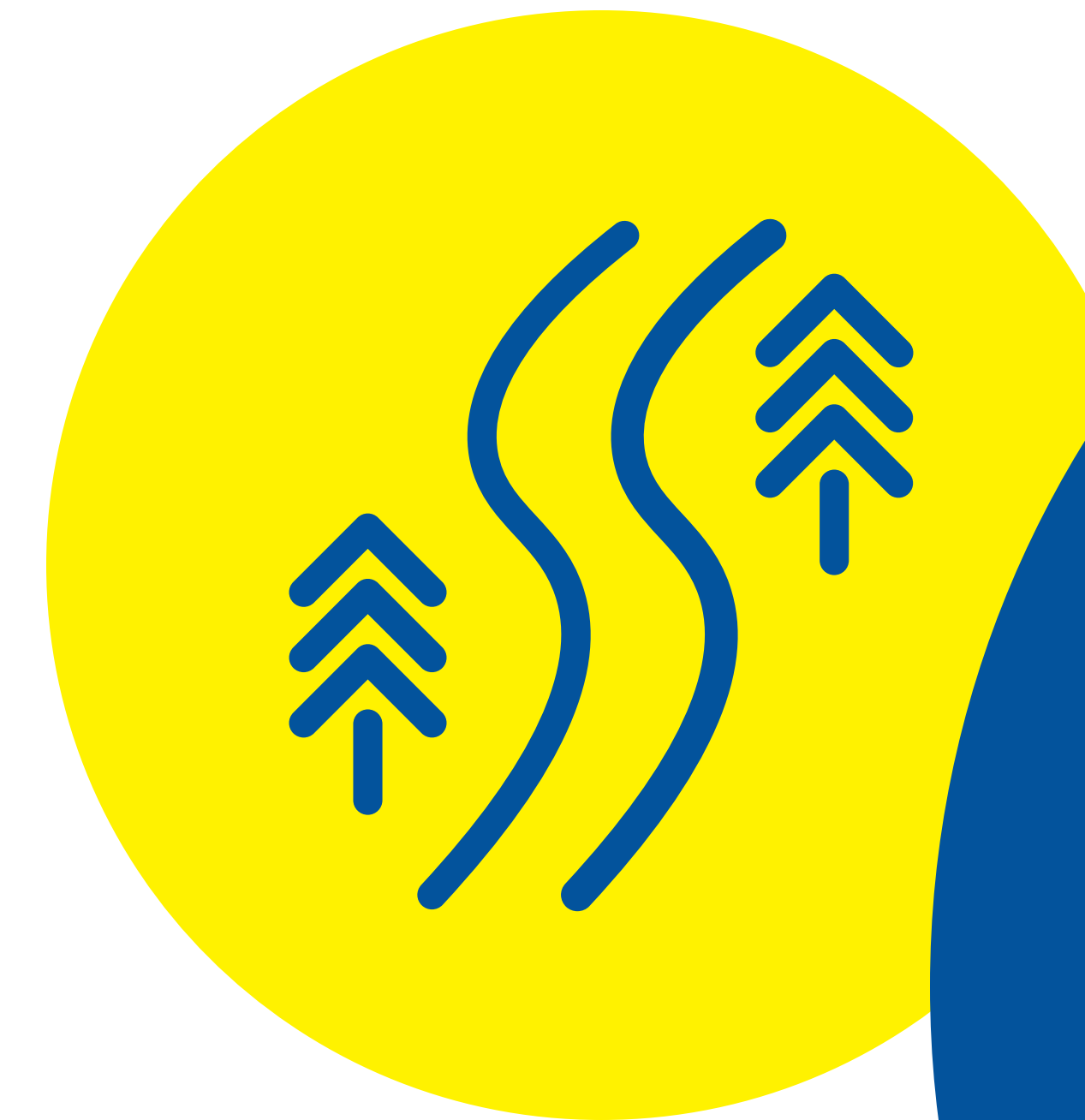
Indigenous Knowledge / Indigenous Land and Resource Use

As part of the Marten Falls First Nation Community Access Road Project potentially impacted Indigenous communities are invited to participate in the Indigenous Knowledge program.

Understanding Aboriginal and Treaty Rights as part of this program is of paramount importance for preventing and reducing harm to Indigenous Peoples' culture and their territories.

So far, Indigenous Knowledge has:

- Helped confirm which route alternatives to move forward with
- Created categories for collecting information (e.g., game trails, fish spawning)
- Provided previously collected information to inform the early stages of the Community Access Road
- Reviewed field program site locations to identify any concerns



To learn more contact:

Andrea Nokleby, Indigenous Knowledge Program

anokleby@dillon.ca

1-800-764-9114



Existing Conditions – Early Findings

Understanding the existing conditions of an area is an important step during the planning of any major project.

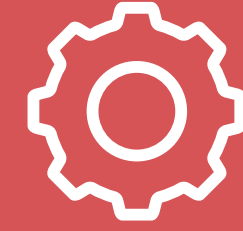
Our technical teams have completed studies and identified the “valued components” for each study area of the Community Access Road.

The valued components are the environmental, health, social, economic or additional elements or conditions of the natural and human environment that may be affected by the road and are of value to Indigenous communities, the public, provincial and federal authorities and other interested parties.



Indigenous Knowledge

- Aboriginal Treaty Rights and Interests




Technical

- Engineering
- Costs




People

- Atmospheric & GHG
- Archaeology
- Acoustic Environment
- Climate Change
- Cultural Heritage
- Human Health
- Land and Resource Use
- Social
- Safety
- Visual Aesthetics




Water

- Fish and Fish Habitat
- Groundwater and Geochemistry
- Peatlands
- Surface Water



Land

- Birds
- Peatlands
- Physiography, Terrain and Soils
- Ungulates
- Vegetation
- Wildlife



Pick up copies of the Existing Condition Fact Sheets to learn about the recent findings.

The Existing Conditions Reports will be shared as part of the Draft Environmental Assessment / Impact Statement in the summer of 2024.

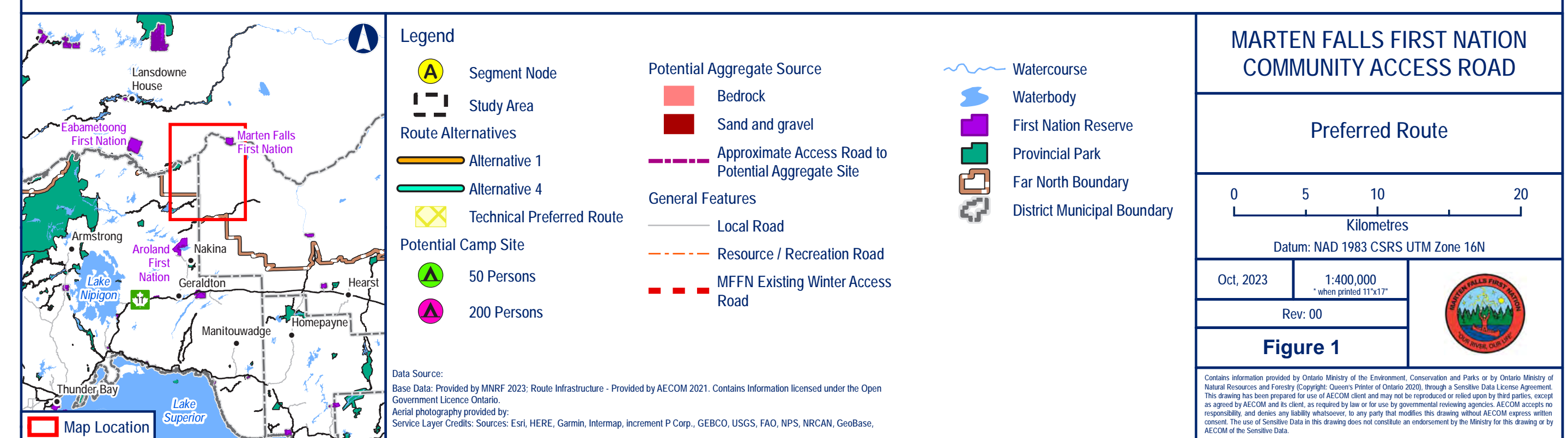
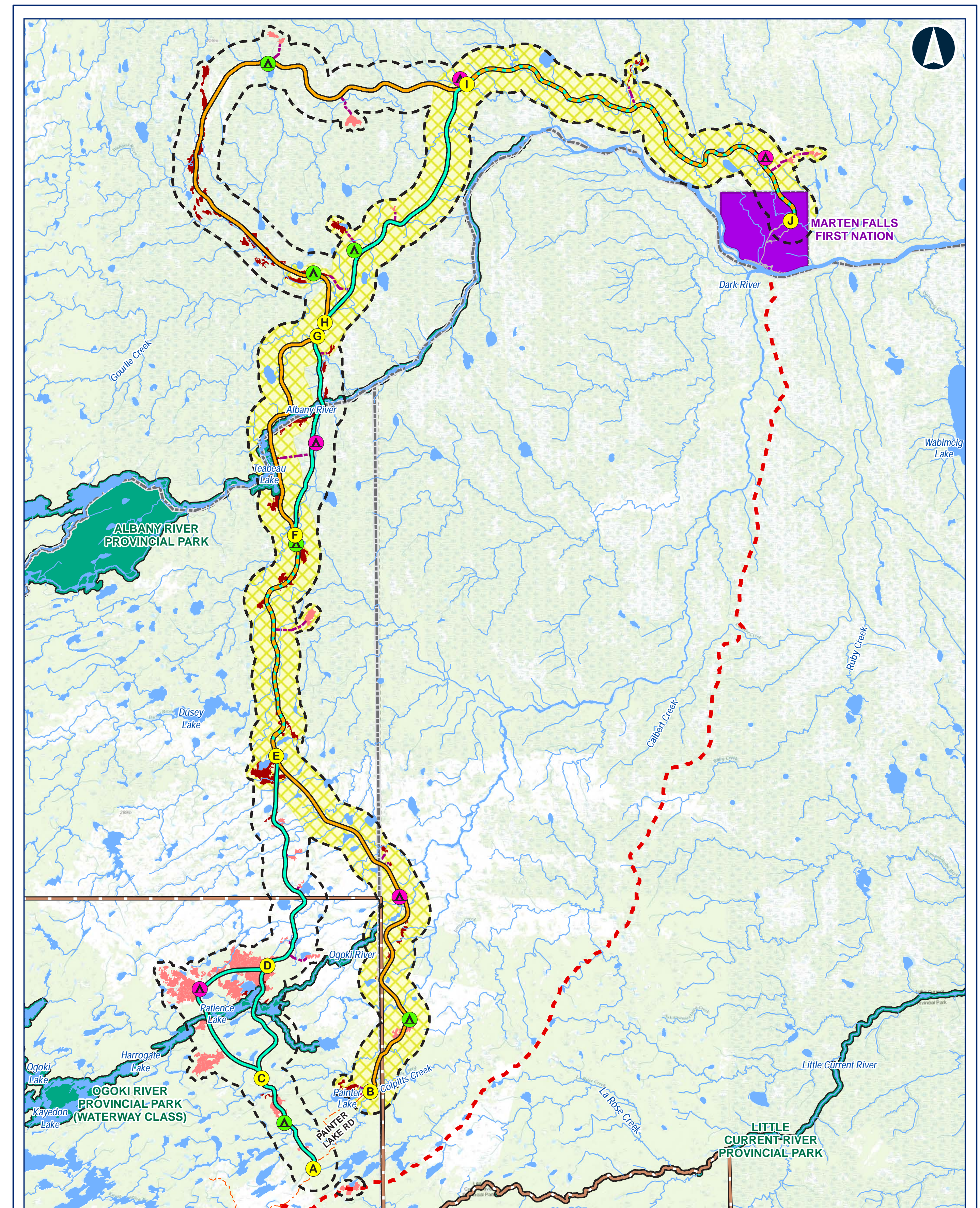


Technically Preferred Route

There are currently two alternatives being considered (**Alternative 1** and **Alternative 4**). Each alternative starts at Painter Lake Road and runs north before turning eastward toward Marten Falls First Nation, roughly following the west / north side of the Albany River.

Alternative 1 and Alternative 4 parallel, overlap and cross each other at multiple locations. These are set or confirmed but there are others that have options to choose from.

The technically preferred route recommendation will be further informed through consideration of Indigenous Knowledge and community input.



Map location: 50.000000, -100.000000. Base Data: Provided by MBRF 2023. Route Infrastructure - Provided by AECOM 2021. Contains information licensed under the Open Government Licence Ontario. Aerial photography provided by Sentinel-Landsat Credits. Sources: Esri, HERE, Garmin, Intermap, increment P Corp., GEBCO, USGS, FAO, NPS, NRCAN, GeoBase.

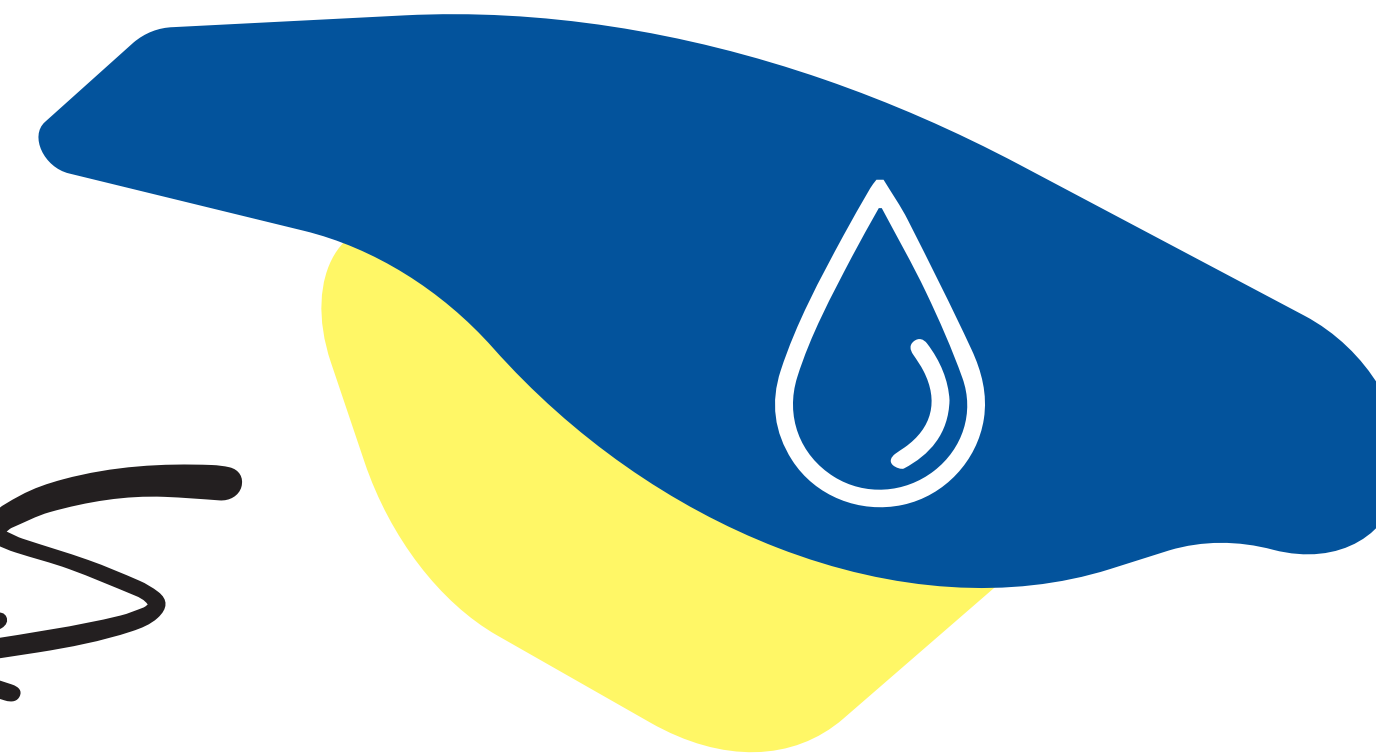


What we considered when evaluating the route options:

Indigenous Knowledge
which considers:
Aboriginal Treaty Rights
and Interests



Water which includes:
fish, groundwater,
peatlands, surface water

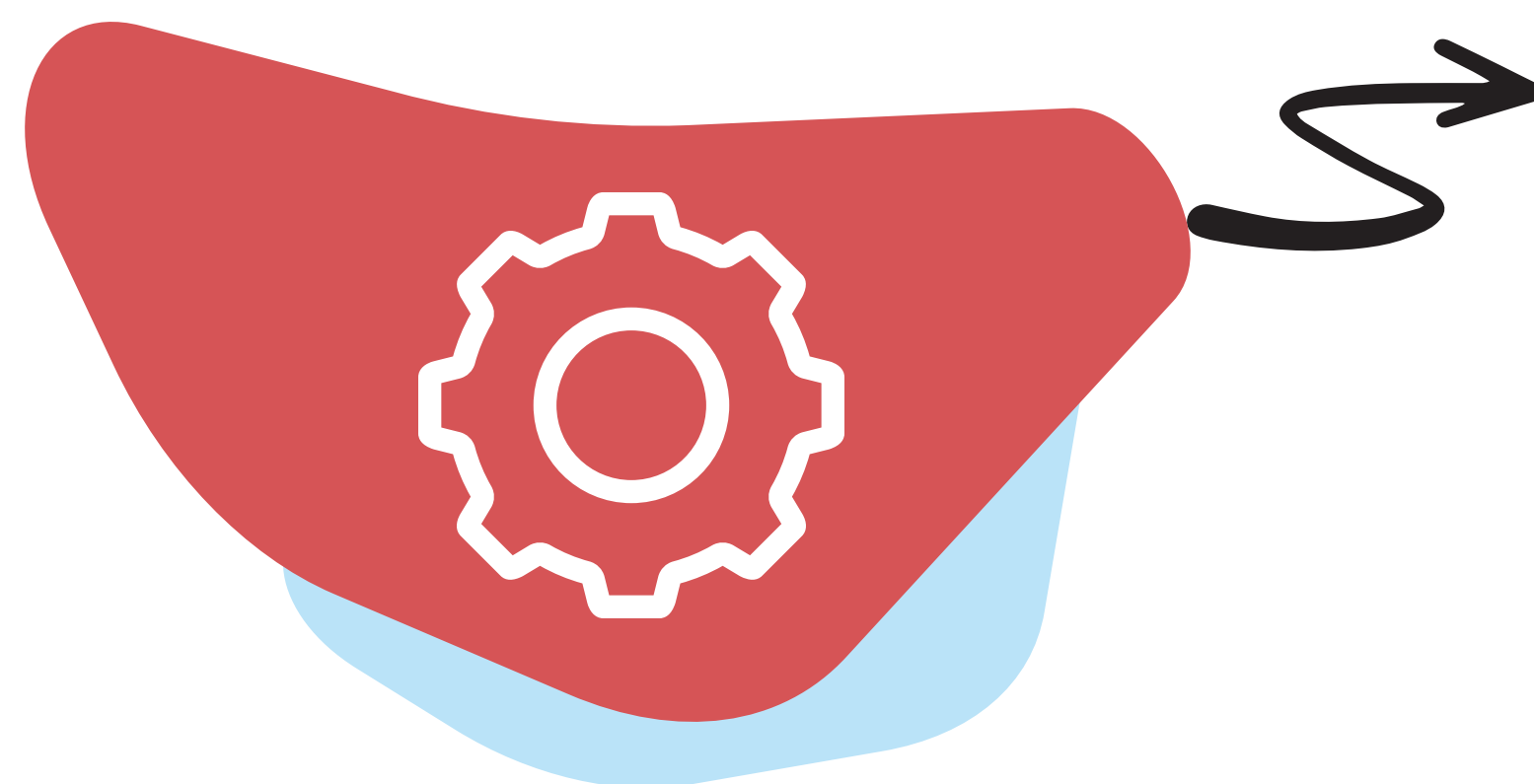


COMMUNITY FEEDBACK, INSIGHTS AND PERSPECTIVES



Land which
includes: birds,
soils, ungulates,
vegetation, wildlife

**Engineering
and Costs**



People which includes: acoustic, air, archaeology,
climate change, cultural heritage, human health,
land and resource use, social, visual



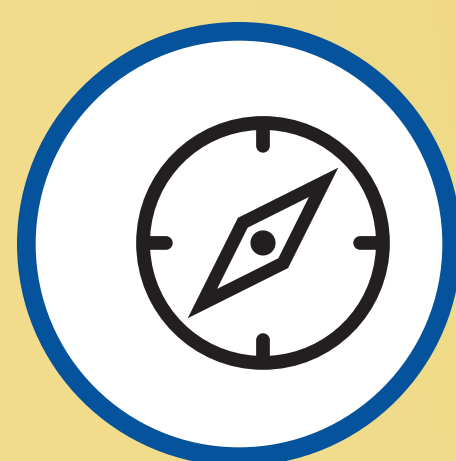


Technically Preferred Route Segment 1 – Ogoki Crossing

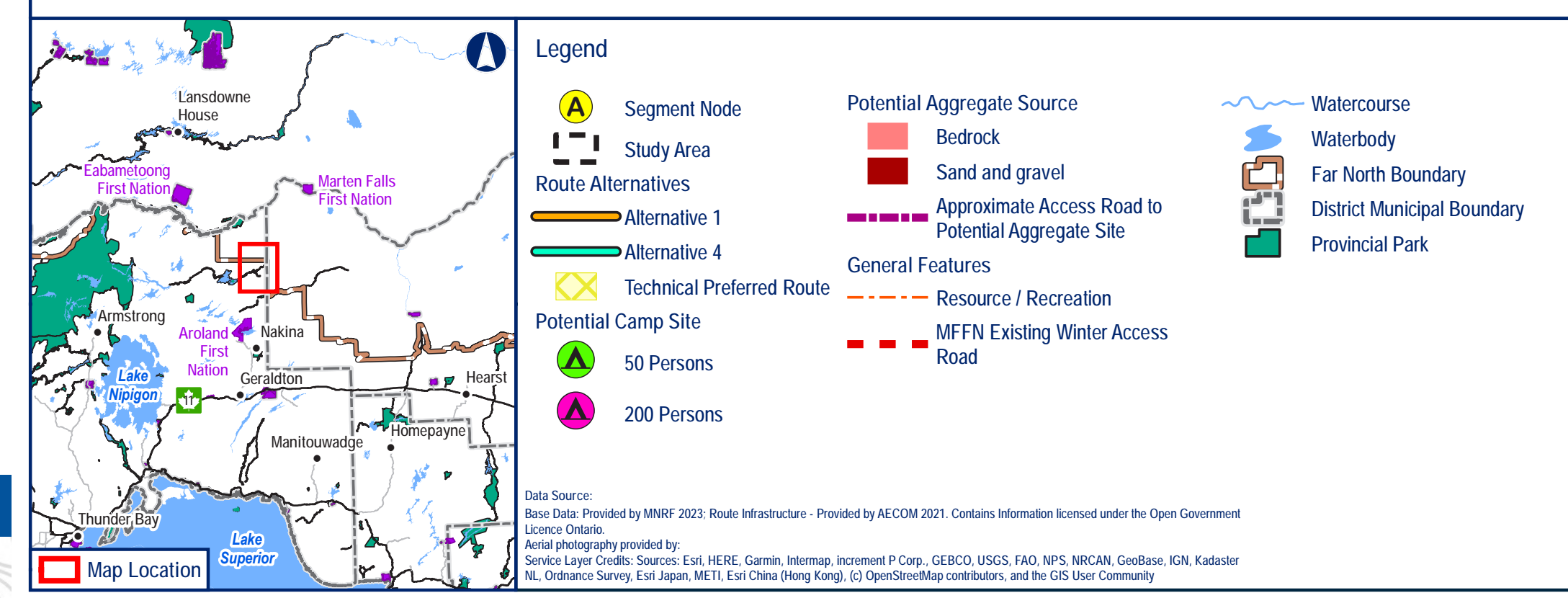
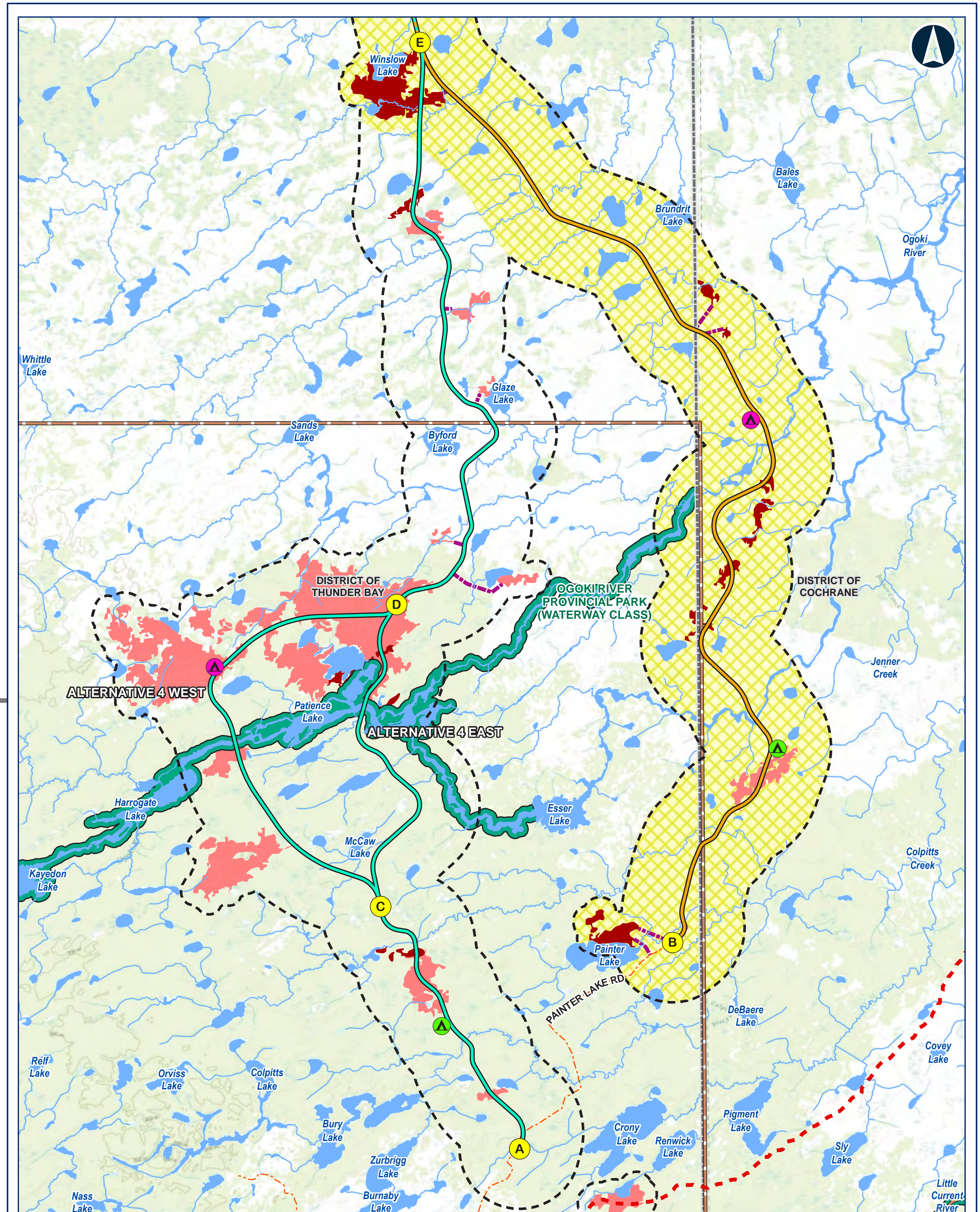
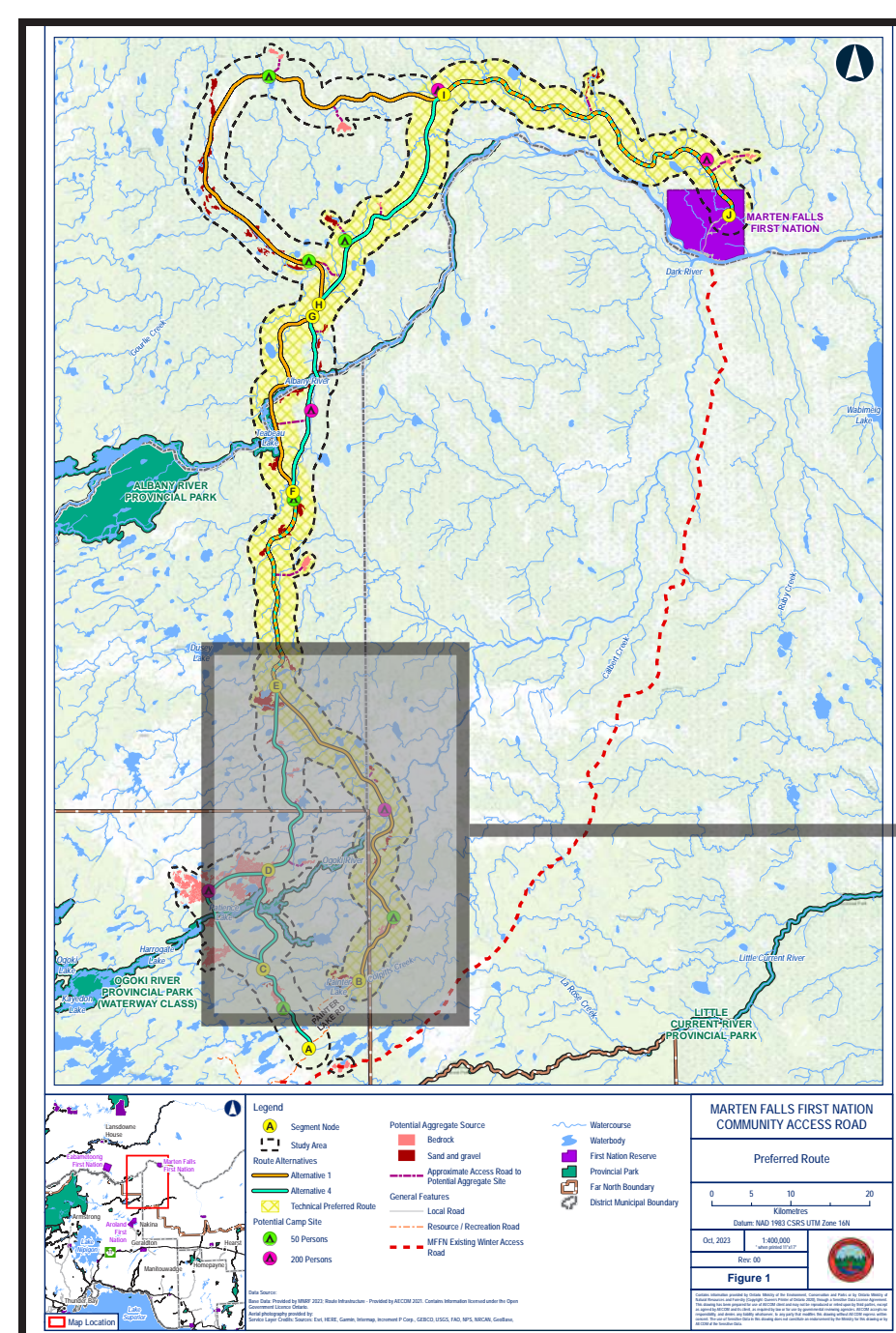
Category	Alternative 1	Alternative 4 East	Alternative 4 West
MFFN Community Feedback	●	●	●
Indigenous Knowledge	Community Input Required	Community Input Required	Community Input Required
Water	●	●	●
Land	●	●	●
People	●	●	●
Engineering, Costs	●	●	●

Legend

- = Most Preferred
- = Moderately Preferred
- = Least Preferred



Visit the Route Selection Station to view maps and provide feedback.



MARTEN FALLS FIRST NATION COMMUNITY ACCESS ROAD

Segment 1 – Ogoki Crossing
Technically Preferred Alternative

0 3 6
Kilometres

Datum: NAD 1983 CSRS UTM Zone 16N

Oct, 2023 1:150,000
"when printed 11x17"





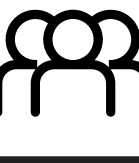

Rev. 00

Figure 5-1

Data Source: Base Data: Provided by MNR 2023; Route Infrastructure - Provided by AECOM 2021. Contains information licensed under the Open Government Licence Ontario. Aerial photography provided by: Service Layer Credits: Sources: Esri, HERE, Garmin, Intermap, increment P Corp., GEBCO, USGS, FAO, NPS, NRCAN, GeoBase, IGN, Kadaster NL, Ordnance Survey, Esri Japan, METI, Esri China (Beijing) Co., Swisstopo, Mapbox Contributors, and the GIS User Community.



Technically Preferred Route Segment 2 – Albany Crossing

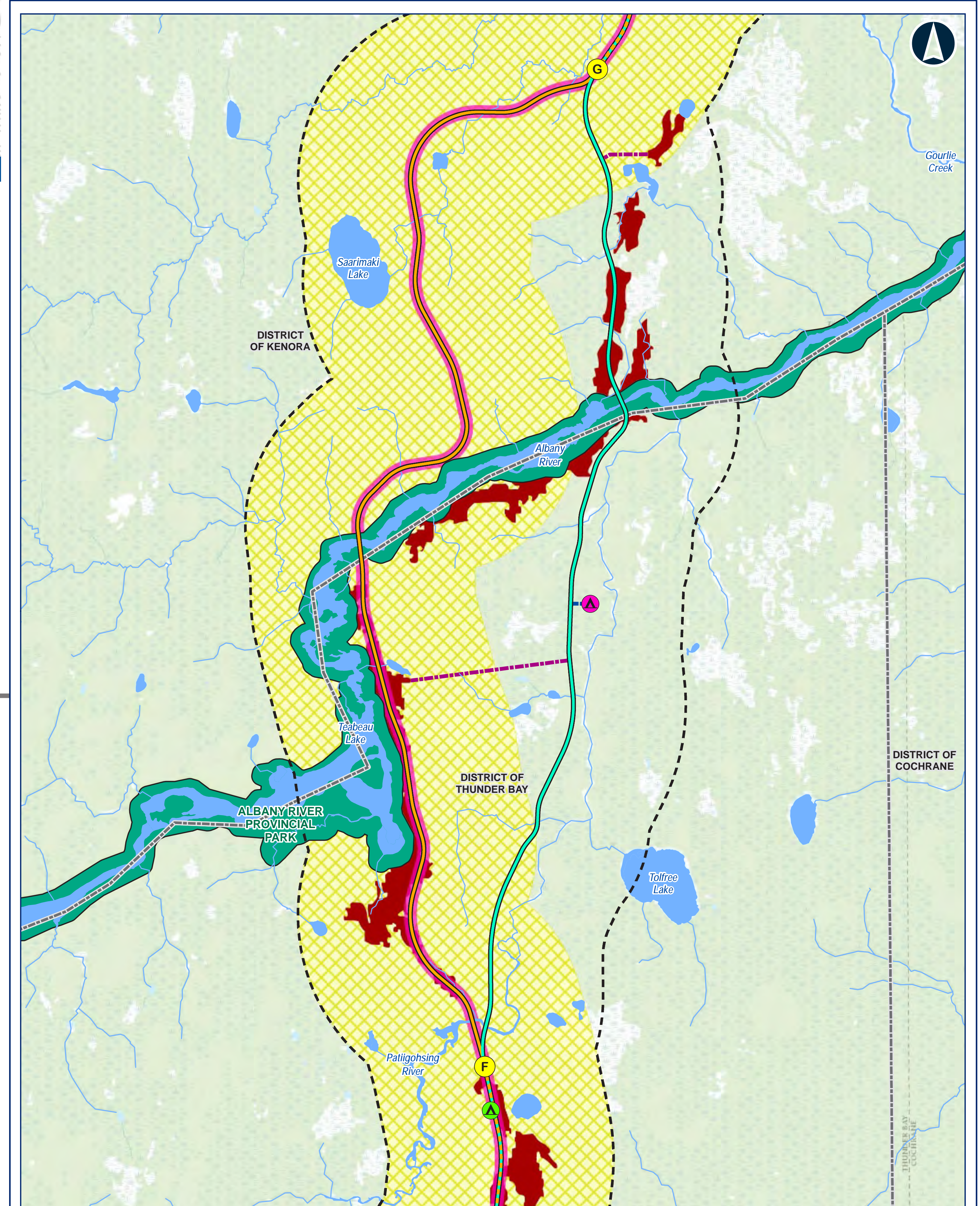
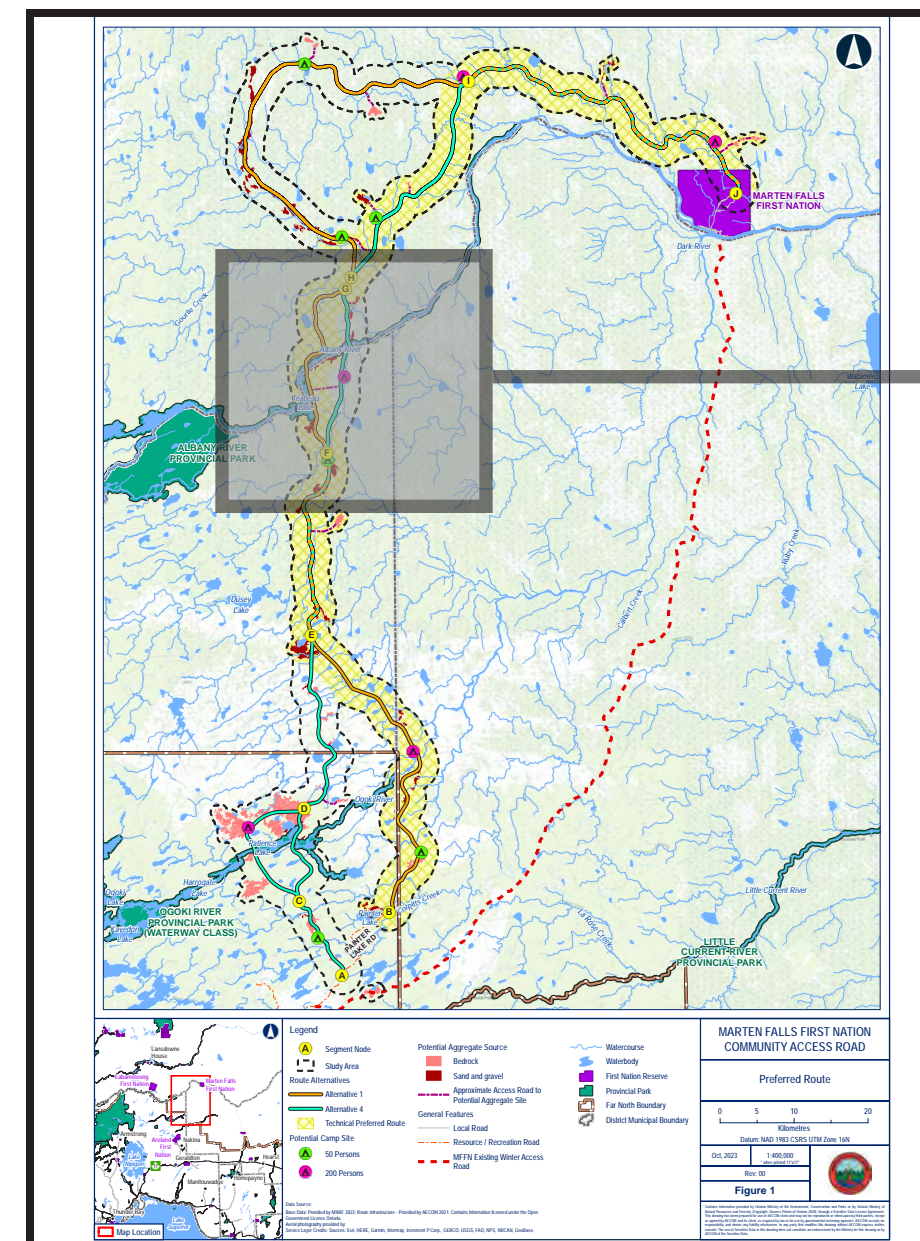
Category	Alternative 1	Alternative 4
MFFN Community Feedback 	●	●
Indigenous Knowledge 	Community Input Required	Community Input Required
Water 	●	●
Land 	●	●
People 	●	●
Engineering, Costs 	●	●

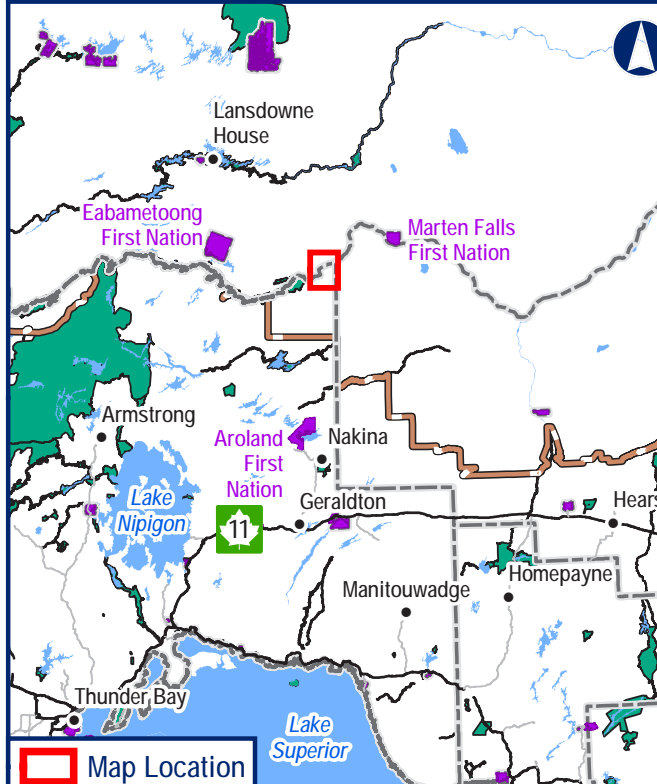
Legend

● = Most Preferred ● = Least Preferred



Visit the Route Selection Station to view maps and provide feedback.





Map Location

Legend

- ⬢ Segment Node
- Study Area
- Route Alternatives**
- Alternative 1
- Alternative 4
- Technical Preferred Route
- Potential Camp Site**
- ▲ 50 Persons
- ▲ 200 Persons
- Approximate Access Road to Potential Construction Camp

Potential Aggregate Source

- Bedrock
- Sand and gravel
- Approximate Access Road to Potential Aggregate Site

General Features

- Watercourse
- Waterbody
- Far North Boundary
- District Municipal Boundary
- Provincial Park

**MARTEN FALLS FIRST NATION
COMMUNITY ACCESS ROAD**

Segment 2 – Albany Crossing
Technically Preferred Alternative

0 2 4
Kilometres

Datum: NAD 1983 CSRS UTM Zone 16N

Oct. 2023 1:80,000
"when printed 11/27"

Rev. 00

Figure 5-2

Canadian information provided by Canada Ministry of the Environment, Conservation and Parks, or by Ontario Ministry of Natural Resources and Forestry. Copyright: Queen's Printer of Canada 2023, through a Scanned Data License Agreement with the Government of Canada. All rights reserved. This map is for informational purposes only and is not intended to be used for any other purpose. It is not intended to be used for any other purpose. It is not intended to be used for any other purpose. The use of Scanned Data in this drawing does not constitute an endorsement by the Ministry for this drawing or for the Scanned Data.



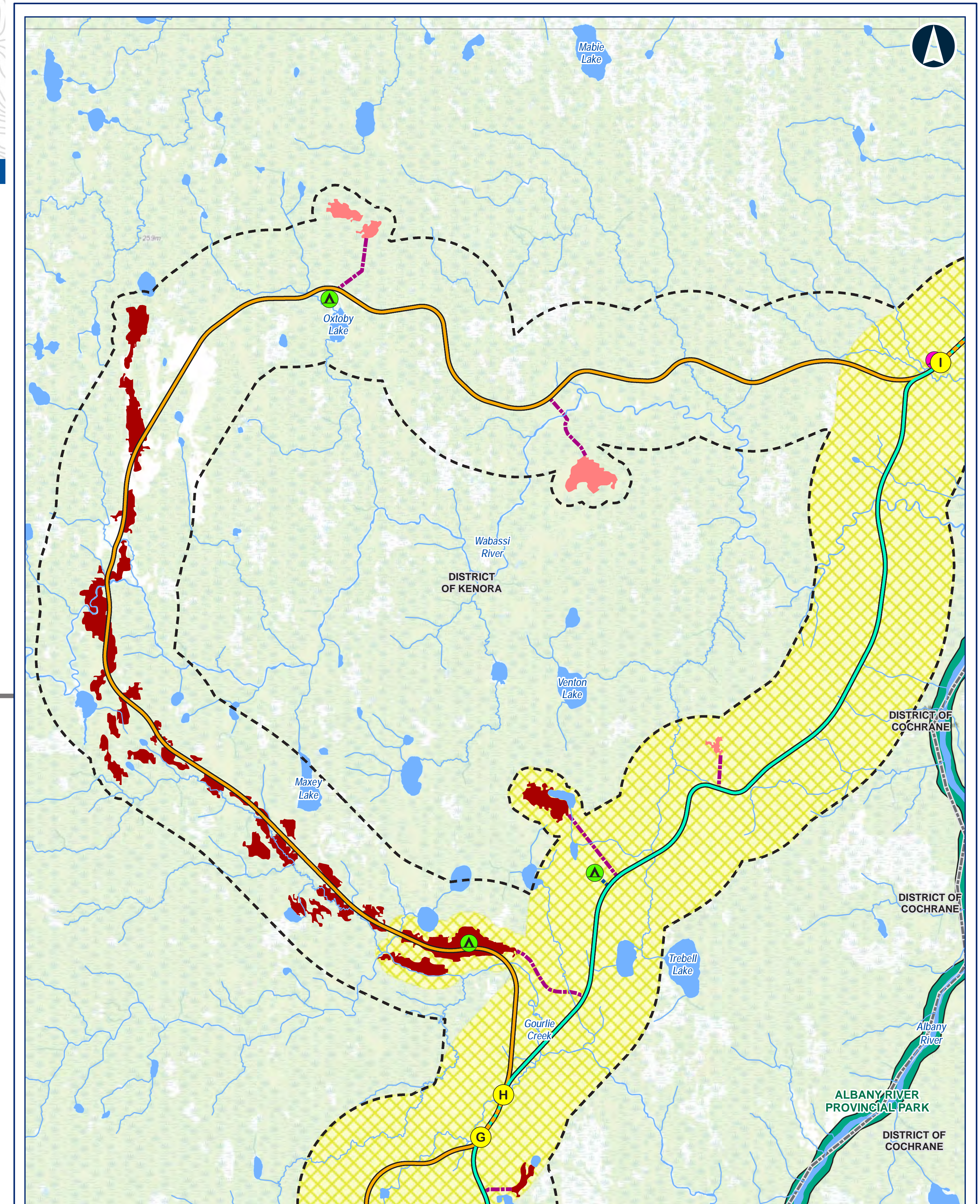
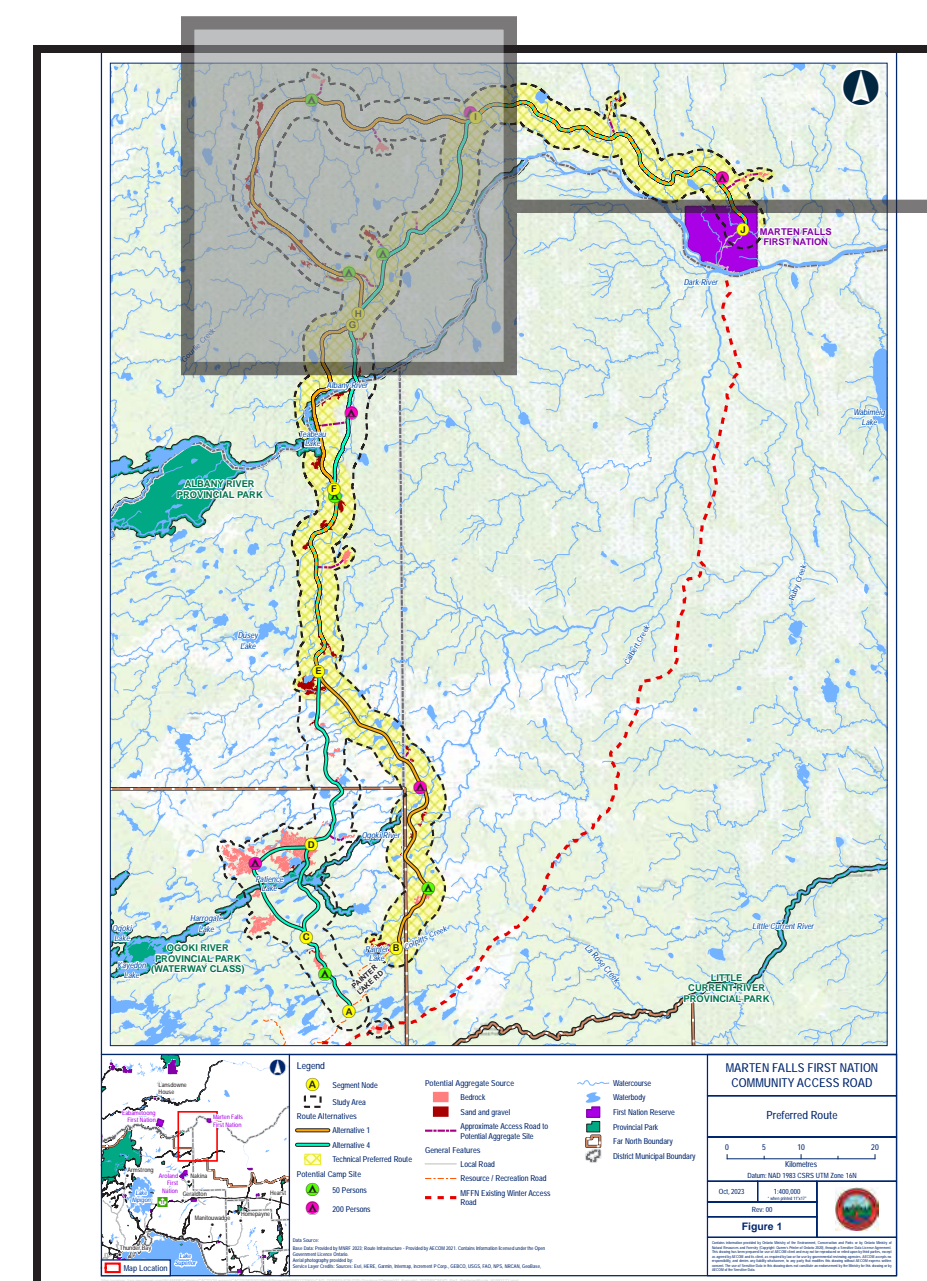
Technically Preferred Route Segment 3 – North of the Albany

Category	Alternative 1	Alternative 4
MFFN Community Feedback	●	●
Indigenous Knowledge	Community Input Required	Community Input Required
Water	●	●
Land	●	●
People	●	●
Engineering, Costs	●	●

Legend

● = Most Preferred ● = Least Preferred

Visit the Route Selection Station to view maps and provide feedback.



Legend

- Segment Node
- Study Area
- Route Alternatives
- Alternative 1
- Alternative 4
- ⊗ Technical Preferred Route
- ▲ Potential Camp Site
- ▲ 50 Persons
- ▲ 200 Persons
- Approximate Access Road to Potential Construction Camp

Potential Aggregate Source

- Bedrock
- Sand and gravel
- Approximate Access Road to Potential Aggregate Site

General Features

- Watercourse
- Waterbody
- Far North Boundary
- District Municipal Boundary
- Provincial Park

Data Source:
Base Data: Provided by MNR 2023 - Route Infrastructure - Provided by AECOM 2021. Contains information licensed under the Open Government Licence Ontario.
Aerial photography provided by: Service Layer Credits: Sources: Esri, HERE, Garmin, Intermap, increment P Corp., GEBCO, USGS, FAO, NPS, NRCAN, GeoBase, IGN, Kadaster NL, Ordnance Survey, Esri, Japan, METI, Esri China (Beijing) Co., Ltd., Swisstopo, Mapbox Contributors, and the GIS User Community

**MARTEN FALLS FIRST NATION
COMMUNITY ACCESS ROAD**

Segment 3 – North of the Albany
Technically Preferred Alternative

0 3 6
Kilometres

Datum: NAD 1983 CSRS UTM Zone 16N

Oct. 2023 1:130,000
"as printed 11x17"

Rev. 00

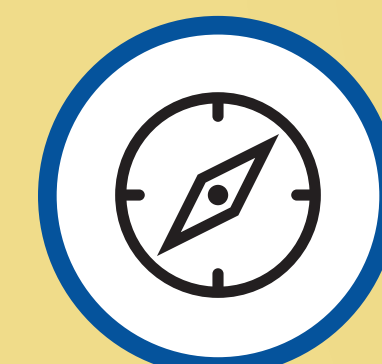
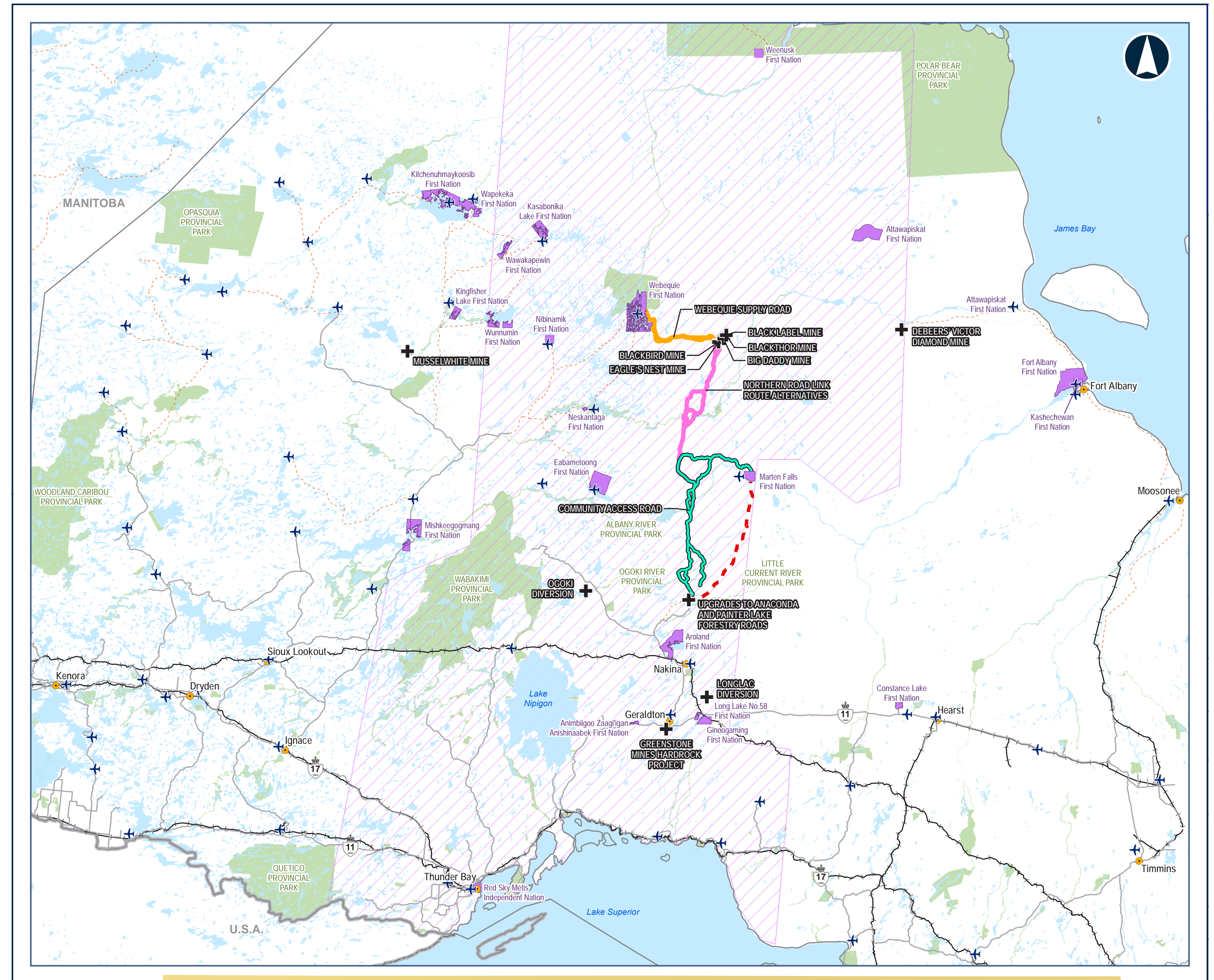
Figure 5-3



Cumulative Effects - Inclusions List

Projects that made the list include:

- Goldcorp Musselwhite Mine
- Debeers Victor Mine
- Greenstone Gold's Hardrock Mine
- Webequie Supply Road
- Northern Road Link
- Anaconda and Painter Lake Forestry access road upgrades
- Eagles Nest Mine
- Black Thor Mine
- Black Bird Mine
- Big Daddy Mine
- Black Label Mine
- Ogoki and Long Lac Diversions



Do you have comments on the inclusions list? Have we missed anything?



What's Coming Up?

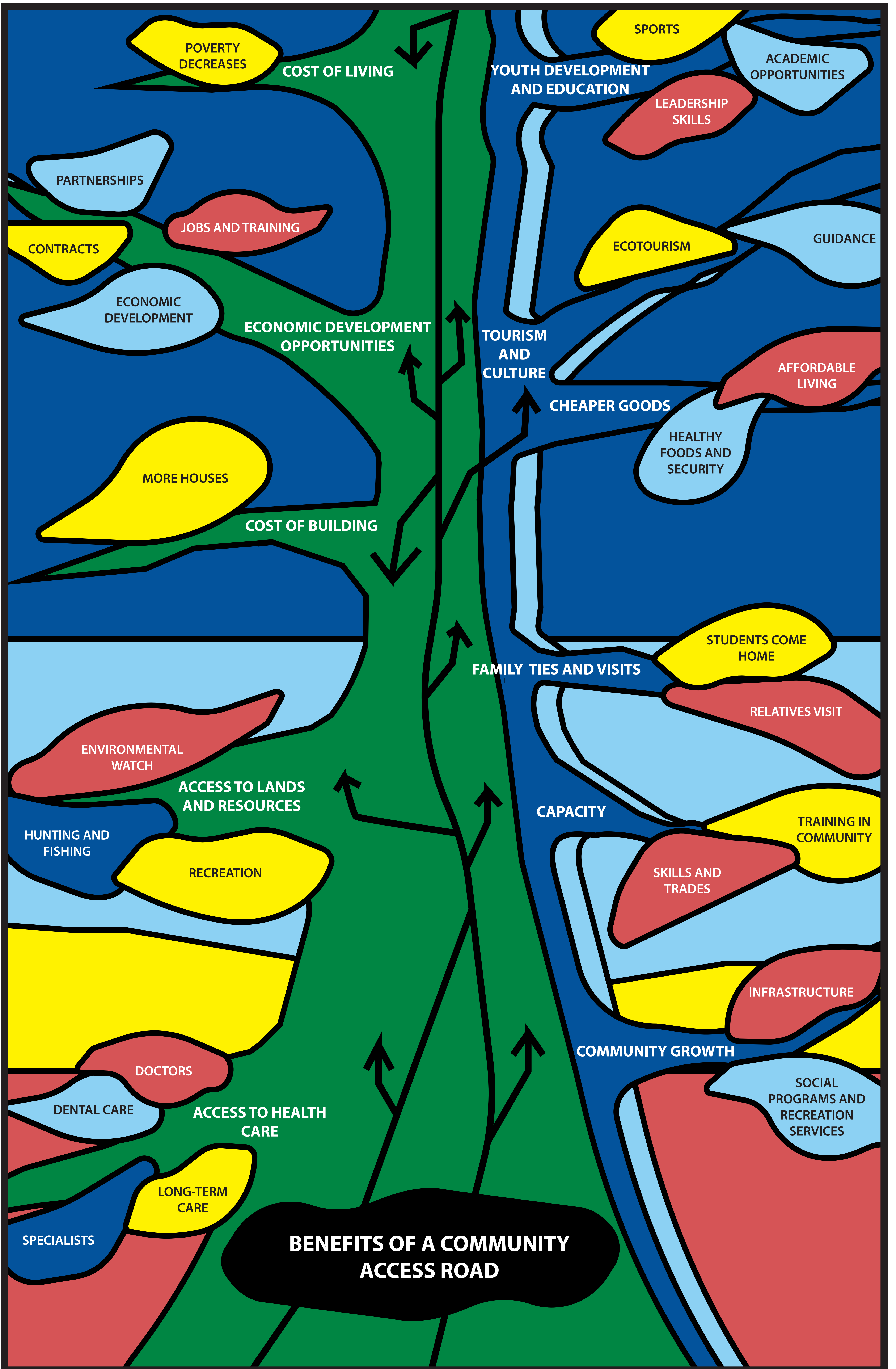


- Field Studies and Socio-Economic Studies are wrapping up in 2024
- Continue consultation and engagement with Marten Falls First Nation members, neighbouring Indigenous communities, interested persons, organizations and groups
- Upcoming ATRI Workshop November 21-23, 2023
- Route Selection Webinar this November (more webinars to come in 2024 including on Cumulative Effects, Engineering and Climate Change.)
- Climate Change Forum in January 2024
- Community-specific Progress Milestone Report #2 to Indigenous communities
- **Achieve Next Milestone: Final Route Selection (end of the year)**

Stay Involved

Your feedback is important.

- Schedule a meeting with us; reach out any time and we can discuss your feedback and answer any questions
- Join our mailing list. Leave your email or address at the welcome table
- Email us at info@martenfallsaccessroad.ca
- Call us at [1-800-764-9114](tel:1-800-764-9114)
- Visit our website www.martenfallsaccessroad.ca
- Follow us on Facebook: <https://www.facebook.com/MFFNCommunityAccessRoadProject/>





Do you have any concerns or feedback you would like to share?