



Field Notice



Summer 2023 Field Notice

Groundwater and Geochemistry, Vegetation

Issued: July 2023

What's Happening?

The following field programs are continuing for the provincial Environmental Assessment (EA) and the federal Impact Assessment (IA) for the Marten Falls First Nation (MFFN) proposed Community Access Road. Field crews have been actively monitoring the forest fire situation in the area and are in regular communication with the fire base in Geraldton.

Groundwater and Geochemistry

The groundwater and geochemistry program has been ongoing since 2022 and continues this summer to help understand groundwater conditions in the study area. Drilling of monitoring wells was completed during the spring 2023 field program. Monitoring wells will now be sampled three times a year for a period of two years to support the environmental assessment.

- The spring groundwater sampling program began on June 26, 2023 and was completed on July 6, 2023.
- The summer groundwater sampling program is expected to begin in August.
- Collected samples are sent for laboratory analysis and will be performed for a wide variety of parameters including general water chemistry, metals, solids content, nutrients, hydrocarbons and others.





Field Notice



Vegetation

The vegetation program has been in place since 2019, with field studies occurring in 2019, 2021 and 2022 to better understand potential effects that the proposed Community Access Road may have on plants, such as reindeer lichen (wabakamik), goose berry (oshabomin) and speckled alder (wadopatik), and peatlands in the area. This summer, field crews will be visually observing and documenting plant communities and wetland areas throughout the study area. Field crews will observe areas from the air in helicopters and on the ground. Field surveys will be non-invasive with equipment limited to hand-operated soil augers or peat probes. Vegetation studies will focus on areas associated with potential aggregate resources and access roads. The next vegetation program is planned for August 2023.

Field crews will include a MFFN community member Field Assistant or Community Member Advisor.

To learn more about vegetation, groundwater and geochemistry, view [webinar recordings](#) and [educational videos](#) on our website.

An update will be provided once dates are confirmed or if there are scheduling changes due to weather or other conditions. The field crews will be accessing sites across the study area by helicopter, you may see helicopters in the area.

Where?

See the next page for a map.

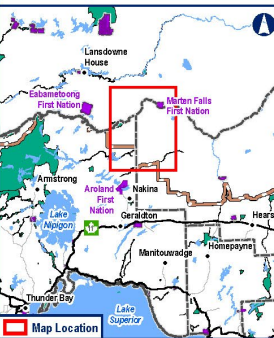
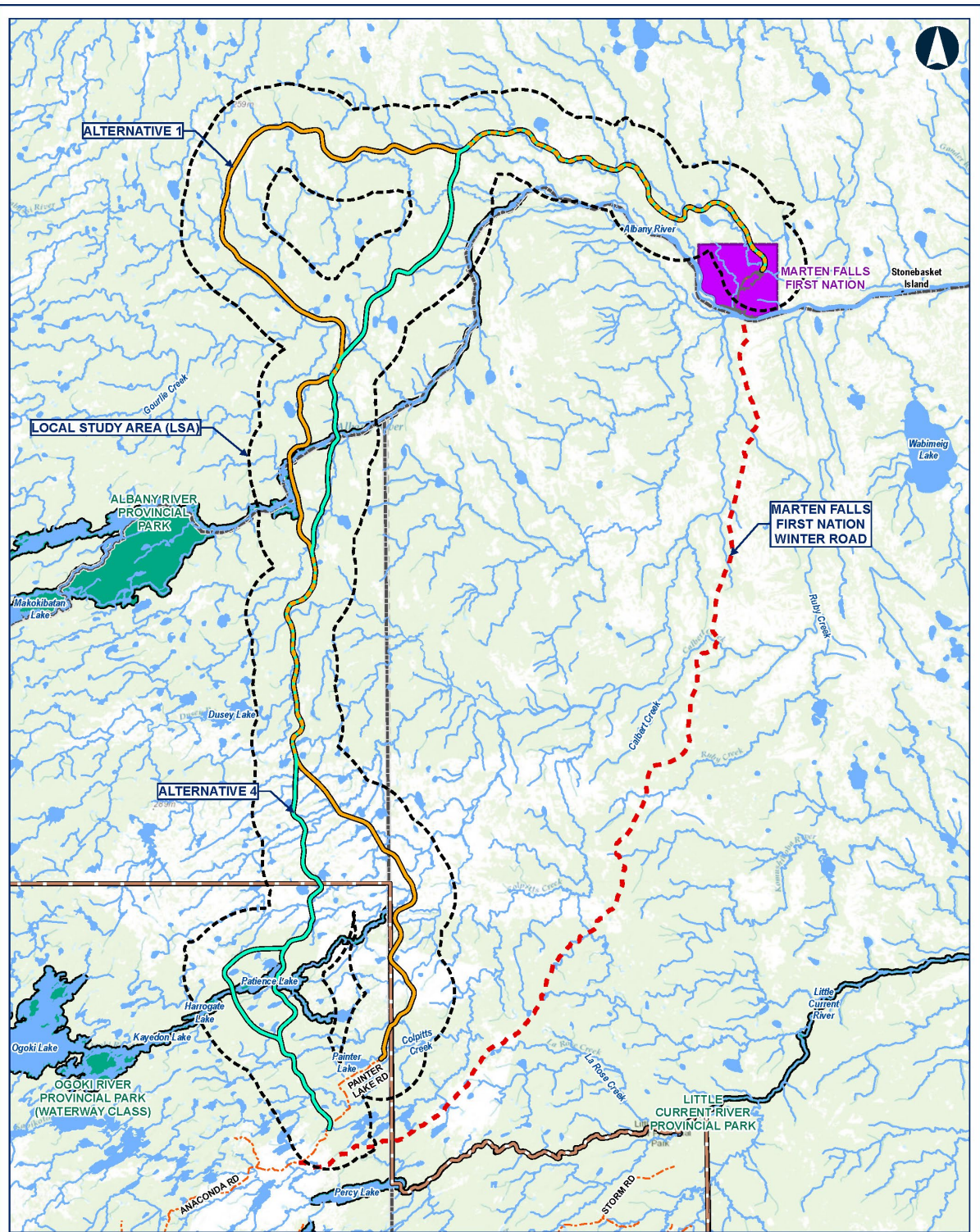
Contact Information

You are welcome to contact the Project Team at any time with questions or comments:

Bob Baxter
Senior Community Member
Advisor,
Marten Falls First Nation

Lawrence Baxter
Senior Community Member
Advisor,
Marten Falls First Nation

Jennifer Bruin
Technical Advisor,
Marten Falls First Nation
Community Access Road



Legend

- Local Study Area (LSA)
- Route Alternatives
 - Alternative 1
 - Alternative 4
- General Features
 - Local Road
 - Resource / Recreation Road
 - MFN Existing Winter Access Road
 - Watercourse
 - Waterbody

- Far North Boundary
- First Nation Reserve
- District Municipal Boundary
- Provincial Park

Notes:

None

Data Source:

Base Data: Provided by MNRF 2023, Route Infrastructure: Provided by AECOM/2021. Contains Information licensed under the Open Government Licence Ontario.

**MARTEN FALLS FIRST NATION
COMMUNITY ACCESS ROAD**

Summer 2023 Field Programs

0 5 10 20
Kilometres

Datum: NAD 1983 CSRS UTM Zone 18N

July 2023 1:450,000
Scale printed 1/1/21

Rev 00

Figure 1

Contains information provided by Ontario Ministry of the Environment, Conservation and Parks or by Ontario Ministry of Natural Resources and Forestry (Government of Ontario). Through a Restricted Data License Agreement, this information has been provided for use in the design and construction of the project. It is not to be used for any other purpose without the written consent of the Ontario Ministry of the Environment, Conservation and Parks or the Ontario Ministry of Natural Resources and Forestry. The use of this information in any other way is strictly prohibited. The use of this information does not constitute an endorsement or liability for the design or by AECOM or the Government of Ontario.