



Field Notice



Spring 2023 Field Notice

Vegetation and Peatlands, Cultural Heritage, Ungulate Remote Camera, Groundwater and Geochemistry, Wolverine Hair Snag, Socio-Economics and Human Health

Issued: April 2023

What's Happening?

The following field programs are continuing for the provincial Environmental Assessment (EA) and the federal Impact Assessment (IA) for Marten Falls First Nation's proposed Community Access Road:

Vegetation and Peatlands

To better understand potential effects that the proposed Community Access Road may have on plants, such as reindeer lichen (wabakamik), goose berry (oshabomin) and speckled alder (wadopatik), and peatlands in the area, field crews will be visually observing and documenting plant communities and wetland areas throughout the study area. Field crews will observe areas from the air in helicopters and on the ground. Field surveys will be non-invasive with equipment limited to hand-operated soil augers or peat probes. Vegetation studies will focus on areas associated with potential aggregate resources and access roads. These are a continuation of field studies that took place in 2019, 2021 and 2022.

The vegetation and peatlands programs are expected to begin in June 2023.

Cultural Heritage

The cultural heritage field program will include surveys from the air of built heritage and cultural heritage resources in the study area. Field surveys will be non-invasive and will consist of photographic and written documentation, and community-based interviews. Field crews will be in the Marten Falls First Nation community for the first part of this field program and will stage out of Geraldton for the second portion.

The cultural heritage program is expected to begin in May 2023.





Field Notice



Ungulate Remote Camera

Remote cameras for the ungulate remote camera program will be retrieved from the field this spring. Cameras have been in the field for two years documenting presence, distribution and seasonal patterns of wolves (maihganang), moose (moozoog) and other wildlife.

The ungulate remote camera program is expected to begin in May 2023.

Groundwater and Geochemistry

The groundwater and geochemistry program is continuing. Drilling of sites not completed in 2022 will continue in spring 2023. Monitoring wells will be sampled three times a year until they are decommissioned in spring 2024.

- Groundwater drilling started on April 10 and are anticipated to be completed by April 30.
- Due to the presence of wolverine in the study area, a second round of groundwater drilling will be completed outside of the wolverine denning period. This second round is required for two sites, and is planned to start in early June.
- A groundwater sampling program is also expected to start in late May / early June.

Wolverine (wishkobishag) Hair Snag

The wolverine (wishkobishag) hair snag program is continuing, hair snag traps will continue to be baited monthly and traps will be retrieved from the field in late spring.

The wolverine hair snag program will continue to rebait traps monthly until decommissioning in June 2023.

Field crews will include Marten Falls First Nation community member Field Assistants or Community Member Advisors.





Field Notice



Socio-Economic and Human Health

The socio-economic and human health team will be conducting interviews and focus groups in Marten Falls First Nation and Thunder Bay with Marten Falls First Nation members in May and June 2023.

To learn more about vegetation, peatlands, cultural heritage, groundwater, ungulates and furbearers including wolverine, view [webinars recordings](#) and [educational videos](#) on our website.

An update will be provided once dates are confirmed or if scheduling changes due to weather or other conditions. The field crews will be accessing sites across the study area by helicopter, you may see helicopters in the area.

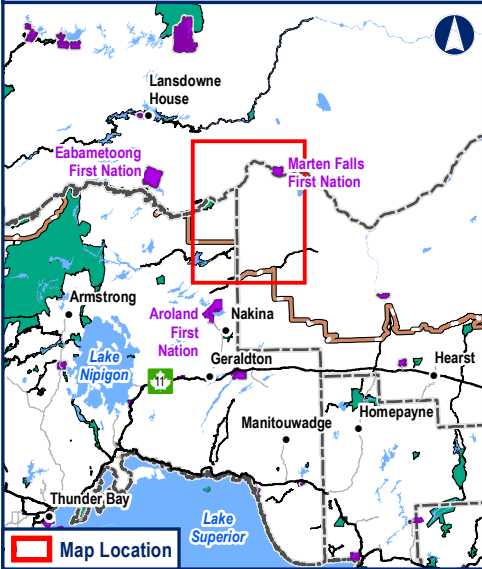
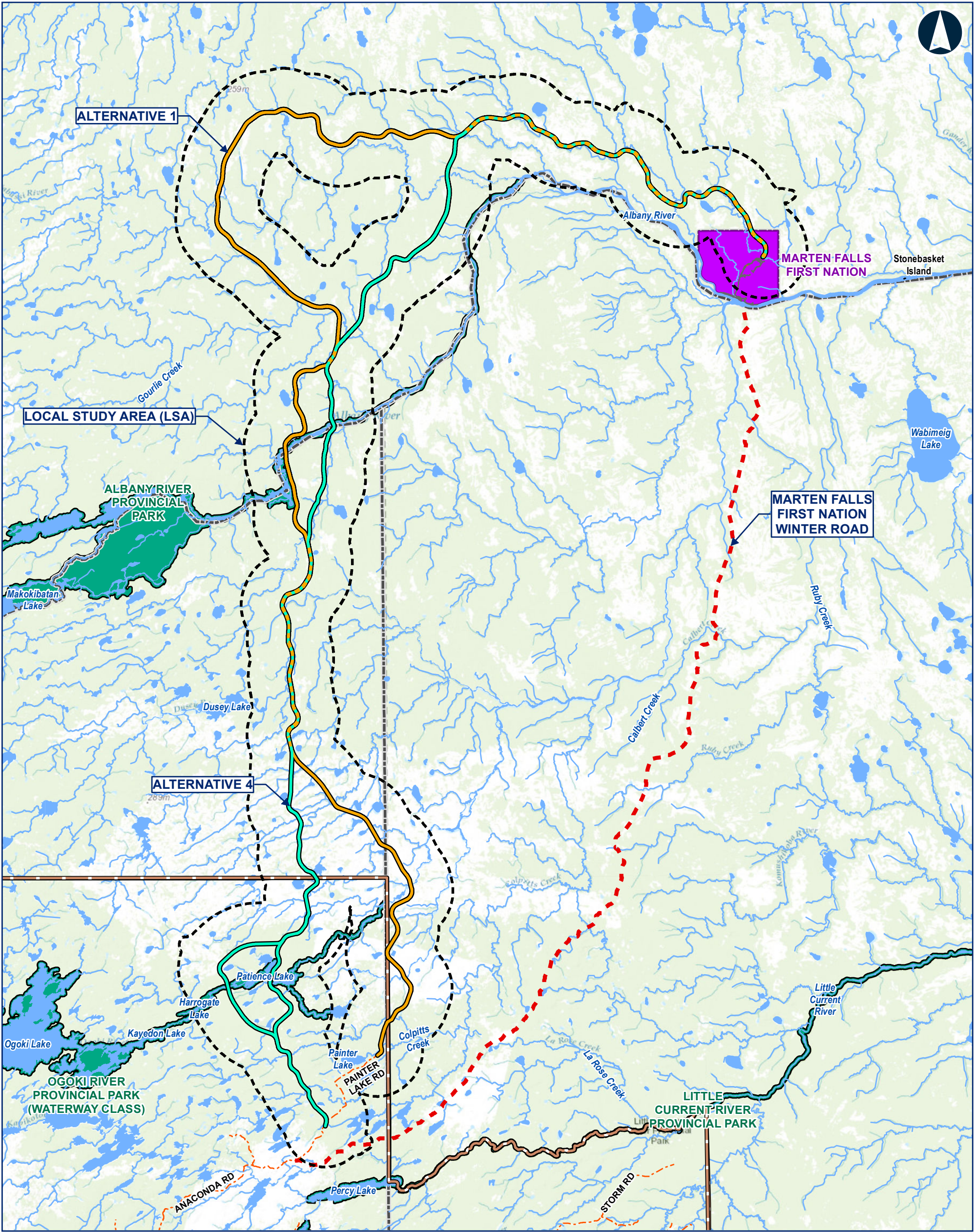
Where?

See the next page for a map.

Contact Information

You are welcome to contact the Project Team at any time with questions or comments:

Bob Baxter
Senior Community Member Advisor Marten Falls First Nation
1-800-764-9114 | info@martenfallsaccessroad.ca
www.martenfallsaccessroad.ca



Legend

Local Study Area (LSA)

Route Alternatives

Alternative 1

Alternative 4

General Features

Local Road

Resource / Recreation Road

MFFN Existing Winter Access Road

Watercourse

Waterbody

Notes:
None

Data Source:
Base Data: Provided by MNR 2023; Route Infrastructure - Provided by AECOM 2021. Contains Information licensed under the Open Government Licence Ontario.

Far North Boundary

First Nation Reserve

District Municipal Boundary

Provincial Park


**MARTEN FALLS FIRST NATION
COMMUNITY ACCESS ROAD**

Spring 2023 Field Programs

0 5 10 20
Kilometres

Datum: NAD 1983 CSRS UTM Zone 16N

Apr. 2023	1:450,000 *when printed 11"x17"
Rev:00	
Figure 1	



Contains information provided by Ontario Ministry of the Environment, Conservation and Parks or by Ontario Ministry of Natural Resources and Forestry (Copyright: Queen's Printer of Ontario 2020), through a Sensitive Data License Agreement. This drawing has been prepared for use of AECOM client and may not be reproduced or relied upon by third parties, except as agreed by AECOM and its client, as required by law or for use by governmental reviewing agencies. AECOM accepts no responsibility, and denies any liability whatsoever, to any party that modifies this drawing without AECOM express written consent. The use of Sensitive Data in this drawing does not constitute an endorsement by the Ministry for this drawing or by AECOM of the Sensitive Data.