



Field Notice

Wolverine Den Surveys in Support of the Groundwater and Geochemistry Program

Issued: February 2022

What's Happening?

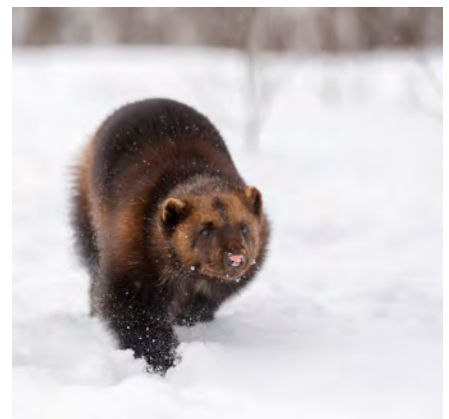
To support the Groundwater and Geochemistry field program, wolverine den surveys are likely starting in advance of tree clearing activities (for the Groundwater and Geochemistry Program) for the provincial Environmental Assessment (EA) and federal Impact Assessment (IA) for Marten Falls First Nation's proposed Community Access Road. The wolverine den surveys will only take place if the Groundwater and Geochemistry field program takes place this spring.

The purpose of this field program is to confirm the presence / absence of active wolverine dens within 4 km of groundwater monitoring well locations, which are located along both route alternatives. If confirmed, mitigation measures will be employed to avoid disturbance to denning wolverines. Field crews will fly parallel transects, or straight lines, within a 4 km radius around each groundwater monitoring well location and observe for wolverine tracks. If conditions are favourable, the field crew will land to verify observed tracks.

When?

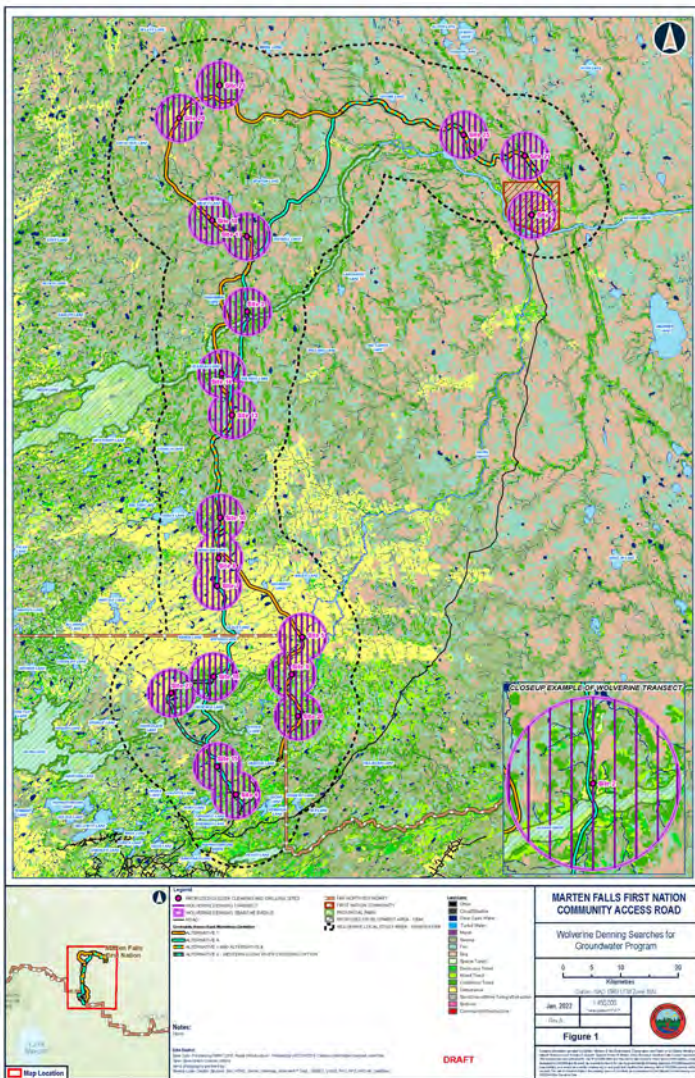
- Wolverine den surveys are expected to start February 2022, but exact dates aren't confirmed yet. Surveys could begin as early as this week (week of February 14, 2022). We will provide updates once dates are confirmed.
- The field crews will be conducting the surveys by helicopter, so you may see helicopters in the area.

If wolverine den surveys are not required due to the Groundwater and Geochemistry field program timing, an update will be provided.





MARTEN FALLS FIRST NATION ALL SEASON COMMUNITY ACCESS ROAD



Contact Information

You are welcome to contact the Project Team at any time with questions or comments:

Lawrence Baxter

Senior Community Member Advisor
Marten Falls First Nation

James McCutcheon

Project Manager
AECOM

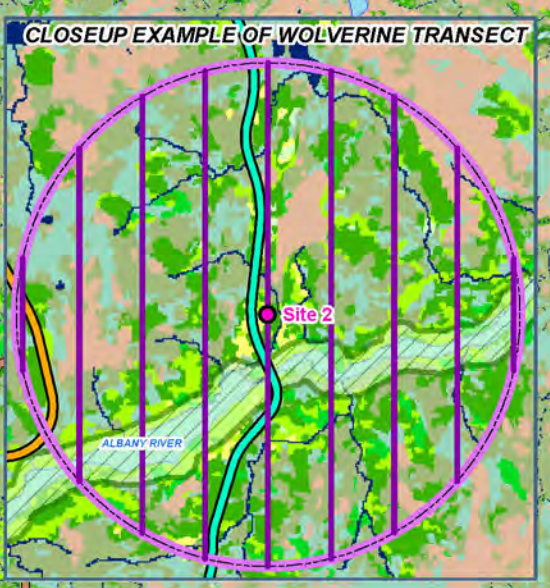
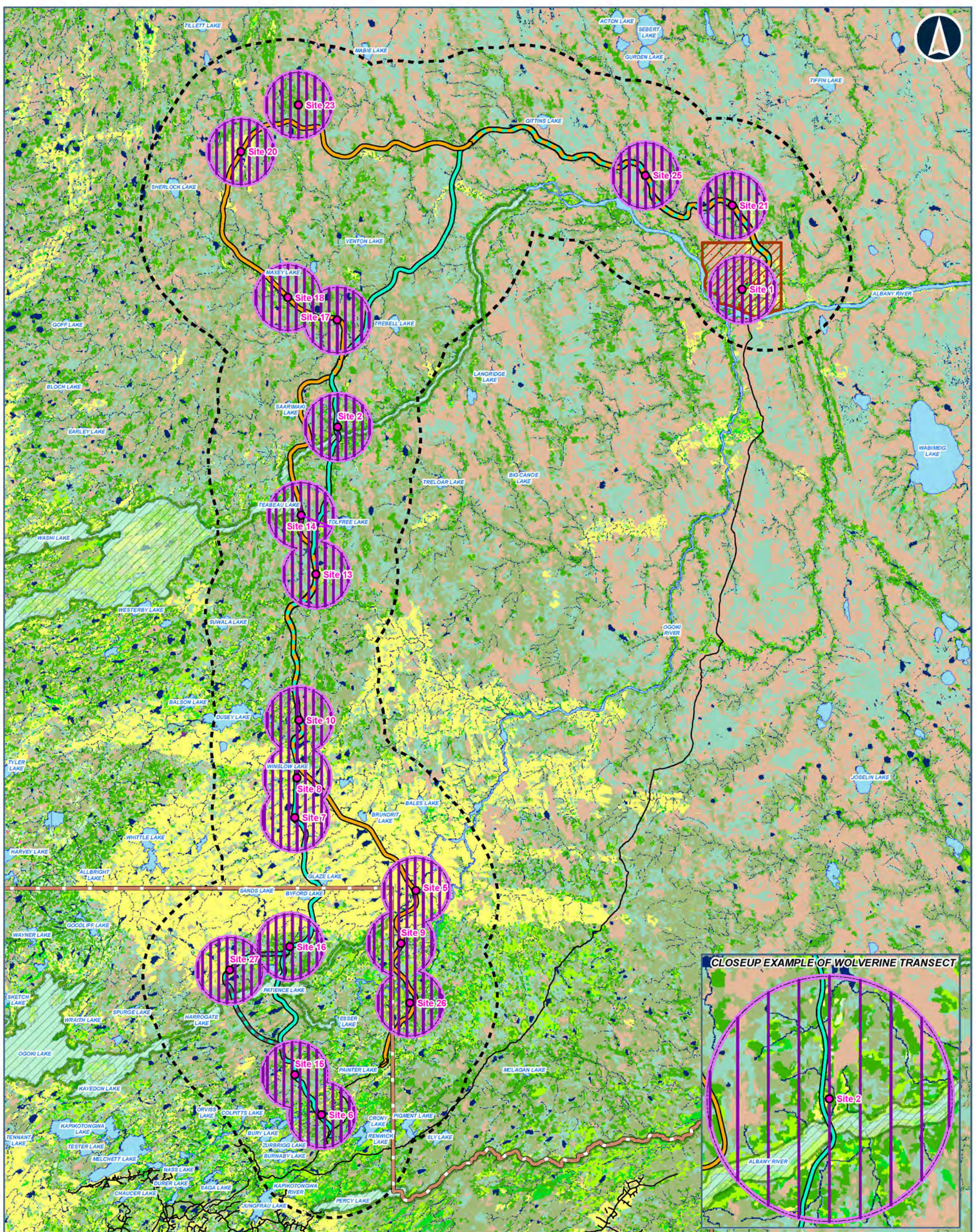
[1-800-764-9114](tel:18007649114)

info@martenfallsaccessroad.ca

www.martenfallsaccessroad.ca

See the next page for a larger sized map.





Legend

- PROPOSED GOLDR CLEARING AND DRILLING SITES
- WOLVERINE DENNING TRANSECT
- WOLVERINE DENNING SEARCH RADIUS
- ROAD
- Community Access Road Alternatives Centerline
 - ALTERNATIVE 1
 - ALTERNATIVE 4
 - ALTERNATIVE 1 AND ALTERNATIVE 4
 - ALTERNATIVE 4 - WESTERN OGOKI RIVER CROSSING OPTION
- FAR NORTH BOUNDARY
- FIRST NATION COMMUNITY
- PROVINCIAL PARK
- PROPOSED DEVELOPMENT AREA - 100M
- WOLVERINE LOCAL STUDY AREA - 10KM BUFFER

Land Cover

- Other
- Cloud/Shadow
- Clear Open Water
- Turbid Water
- Marsh
- Swamp
- Fen
- Bog
- Sparse Treed
- Deciduous Treed
- Mixed Treed
- Coniferous Treed
- Disturbance
- Sand/Gravel/Mine Tailings/Extraction
- Bedrock
- Community/Infrastructure

Notes:
None

Data Source:
Base Data: Provided by MRF 2019, Route Infrastructure - Provided by AECOM 2019. Contains information licensed under the Open Government License Ontario.
Aerial photography provided by:
Service Layer Credits: Sources: Esri, HERE, Garmin, Intermap, increment P Corp., GEBCO, USGS, FAO, NPS, NRCAN, GeoBase,

**MARTEN FALLS FIRST NATION
COMMUNITY ACCESS ROAD**

Wolverine Denning Searches for
Groundwater Program

0 5 10 20
Kilometres

Datum: NAD 1983 UTM Zone 16N

Jan, 2022	1:450,000 *when printed 11"x17"
Rev. A	

Figure 1

DRAFT

Contains information provided by Ontario Ministry of the Environment, Conservation and Parks or by Ontario Ministry of Natural Resources and Forestry. Copyright Queen's Printer of Ontario 2020. Through a Creative Commons License Agreement. This drawing has been prepared for use of AECOM client and may not be reproduced or relied upon by third parties, except as agreed by AECOM and its client, as required by law or for use by governmental reviewing agencies. AECOM accepts no responsibility, and agrees any liability whatsoever, to any party that modifies this drawing without AECOM express written consent. The use of Sensitive Data in this drawing does not constitute an endorsement by the Ministry for this drawing or by AECOM of the Sensitive Data.